

## Anti-CAB39L antibody

<b>Cat. No.</b>	ml222008
<b>Package</b>	25 µl/100 µl/200 µl
<b>Storage</b>	-20°C, pH7.4 PBS, 0.05% NaN <sub>3</sub> , 40% Glycerol

### Product overview

<b>Description</b>	Anti-CAB39L rabbit polyclonal antibody
<b>Applications</b>	ELISA, WB, IHC
<b>Immunogen</b>	Fusion protein of human CAB39L
<b>Reactivity</b>	Human, Mouse
<b>Content</b>	0.3 mg/ml
<b>Host species</b>	Rabbit
<b>Ig class</b>	Immunogen-specific rabbit IgG
<b>Purification</b>	Antigen affinity purification

### Target information

<b>Symbol</b>	CAB39L
<b>Full name</b>	calcium binding protein 39-like

**Synonyms** MO2L; MO25-BETA; bA103J18.3; RP11-103J18.3

**Swissprot** Q9H9S4

### **Target Background**

Calcium-binding protein 39-like is a protein that in humans is encoded by the CAB39L gene. CAB39L (calcium binding protein 39-like), also known as MO25L (MO25-like) or MO2L, is a 337 amino acid protein that is similar to MO25 and is found in the serum of nearly half of all patients diagnosed with acute monocytic leukemia. This suggests a role for CAB39L in carcinogenesis.

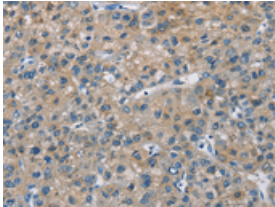
## Applications

### Immunohistochemistry

Predicted cell location: Cytoplasm

Positive control: Human liver cancer

Recommended dilution: 25-100

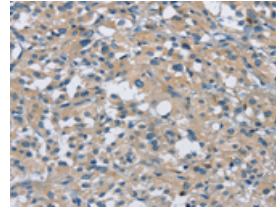


The image on the left is immunohistochemistry of paraffin-embedded Human liver cancer tissue using ml222008(CAB39L Antibody) at dilution 1/30, on the right is treated with fusion protein. (Original magnification:  $\times 200$ )

Predicted cell location: Cytoplasm

Positive control: Human thyroid cancer

Recommended dilution: 25-100



The image on the left is immunohistochemistry of paraffin-embedded Human thyroid cancer tissue using ml222008(CAB39L Antibody) at dilution 1/30, on the right is treated with fusion protein. (Original magnification:  $\times 200$ )

### Western blotting

Predicted band size: 39 kDa

Positive control: Human fetal brain tissue and 231 cells

Recommended dilution: 500-2000

订购热线: 4008-898-798

Gel: 8%SDS-PAGE

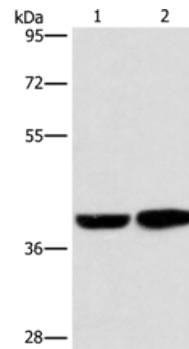
Lysate: 40  $\mu$ g

Lane 1-2: Human fetal brain tissue, 231 cells

Primary antibody: ml222008(CAB39L Antibody) at dilution 1/350

Secondary antibody: Goat anti rabbit IgG at 1/8000 dilution

Exposure time: 15 seconds



#### ELISA

Recommended dilution: 2000-5000

联系电话: 4008-898-798, 021-61725725

联系QQ: 2881505695, 2881505696

邮箱: [mlbio\\_cn@yeah.net](mailto:mlbio_cn@yeah.net)

网址: [www.mlbio.cn](http://www.mlbio.cn)