

## Anti-ANXA2R antibody

<b>Cat. No.</b>	ml161473
<b>Package</b>	25 µl/100 µl/200 µl
<b>Storage</b>	-20°C, pH7.4 PBS, 0.05% NaN <sub>3</sub> , 40% Glycerol

### Product overview

<b>Description</b>	Anti-ANXA2R rabbit polyclonal antibody
<b>Applications</b>	ELISA, WB
<b>Immunogen</b>	Synthetic peptide of human ANXA2R
<b>Reactivity</b>	Human
<b>Content</b>	1.92 mg/ml
<b>Host species</b>	Rabbit
<b>Ig class</b>	Immunogen-specific rabbit IgG
<b>Purification</b>	Antigen affinity purification

### Target information

<b>Symbol</b>	ANXA2R
<b>Full name</b>	annexin A2 receptor
<b>Synonyms</b>	AX2R; AXIIR; C5orf39
<b>Swissprot</b>	Q3ZCQ2

### Target Background

May act as a receptor for annexin II on marrow stromal cells to induce osteoclast formation.

订购热线: 4008-898-798

**Applications**

**Western blotting**

Predicted band size:40 kDa

Positive control:Human small cell malignant tumors (lymphoma) tissue lysate

Recommended dilution: 200-1000

Gel: 12%SDS-PAGE

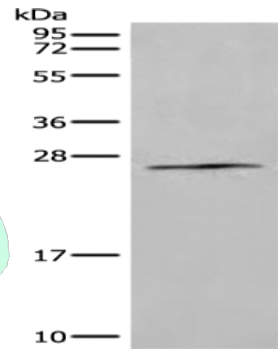
Lysate: 40 µg

Lane: Human small cell malignant tumors (lymphoma) tissue lysate

Primary antibody: ml161473(ANXA2R Antibody) at dilution 1/200

Secondary antibody: Goat anti rabbit IgG at 1/8000 dilution

Exposure time: 10 minutes



**ELISA**

Recommended dilution:5000-10000

联系电话: 4008-898-798, 021-61725725

联系QQ: 2881505695, 2881505696

邮箱: mlbio\_cn@yeah.net

网址: www.mlbio.cn