

Anti-WBSCR16 antibody

| | |
|-----------------|---|
| Cat. No. | ml152208 |
| Package | 25 µl/100 µl/200 µl |
| Storage | -20°C, pH7.4 PBS, 0.05% NaN ₃ , 40% Glycerol |

Product overview

| | |
|---------------------|---|
| Description | Anti-WBSCR16 rabbit polyclonal antibody |
| Applications | ELISA, WB |
| Immunogen | Synthetic peptide of human WBSCR16 |
| Reactivity | Human, Mouse |
| Content | 1.7 mg/ml |
| Host species | Rabbit |
| Ig class | Immunogen-specific rabbit IgG |
| Purification | Antigen affinity purification |

Target information

| | |
|------------------|---|
| Symbol | WBSCR16 |
| Full name | Williams-Beuren syndrome chromosome region 16 |
| Synonyms | |
| Swissprot | Q96I51 |

Target Background

This gene encodes an RCC1-like G-exchanging factor. It is deleted in Williams syndrome, a multisystem developmental disorder caused by the deletion of contiguous genes at 7q11.23.

订购热线: 4008-898-798

Applications

Western blotting

Predicted band size:50 kDa

Positive control:Jurkat cells

Recommended dilution: 200-1000

Gel: 10%SDS-PAGE

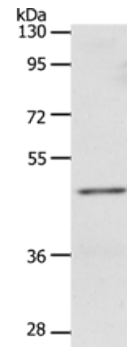
Lysate: 40 µg

Lane: Jurkat cells

Primary antibody: ml152208(WBSCR16 Antibody) at dilution 1/100

Secondary antibody: Goat anti rabbit IgG at 1/8000 dilution

Exposure time: 2 minutes



ELISA

Recommended dilution:1000-2000

联系电话: 4008-898-798, 021-61725725

联系QQ: 2881505695, 2881505696

邮箱: mlbio_cn@yeah.net

网址: www.mlbio.cn