

Anti-MB antibody

Cat. No.	ml122443
Package	25 µl/100 µl/200 µl
Storage	-20°C, pH7.4 PBS, 0.05% NaN ₃ , 40% Glycerol

Product overview

Description	Anti-MB rabbit polyclonal antibody
Applications	ELISA, WB
Immunogen	Full length fusion protein
Reactivity	Human, Mouse, Rat
Content	0.3 mg/ml
Host species	Rabbit
Ig class	Immunogen-specific rabbit IgG
Purification	Antigen affinity purification

Target information

Symbol	MB
Full name	myoglobin
Synonyms	PVALB; myoglobin
Swissprot	P02144

Target Background

This gene encodes a member of the globin superfamily and is expressed in skeletal and cardiac muscles. The encoded protein is a haemoprotein contributing to intracellular oxygen storage and transcellular facilitated diffusion of oxygen. At least three alternatively spliced transcript variants encoding the same protein have been reported.

订购热线: 4008-898-798

Applications

Western blotting

Predicted band size: 17 kDa

Positive control: Human muscle tissue, Rat heart tissue, Mouse heart tissue and Human heart tissue lysates

Recommended dilution: 500-2000

Gel: 12%SDS-PAGE

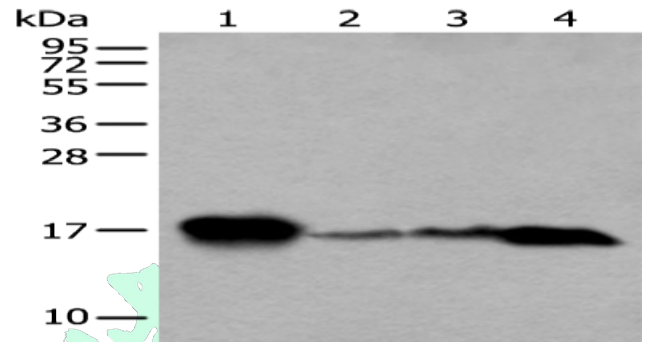
Lysate: 40 μ g

Lane 1-4: Human muscle tissue, Rat heart tissue, Mouse heart tissue and Human heart tissue lysates

Primary antibody: ml122443(MB Antibody) at dilution 1/250

Secondary antibody: Goat anti rabbit IgG at 1/8000 dilution

Exposure time: 1 second



ELISA

Recommended dilution: 5000-10000

联系电话: 4008-898-798, 021-61725725

联系QQ: 2881505695, 2881505696

邮箱: mlbio_cn@yeah.net

网址: www.mlbio.cn