

Anti-NME1 antibody

Cat. No.	ml121039
Package	25 µl/100 µl/200 µl
Storage	-20°C, pH7.4 PBS, 0.05% NaN ₃ , 40% Glycerol

Product overview

Description	Anti-NME1 rabbit polyclonal antibody
Applications	ELISA, WB
Immunogen	Fusion protein of human NME1
Reactivity	Human, Mouse, Rat
Content	0.5 mg/ml
Host species	Rabbit
Ig class	Immunogen-specific rabbit IgG
Purification	Antigen affinity purification

Target information

Symbol	NME1
Full name	NME/NM23 nucleoside diphosphate kinase 1
Synonyms	NB, AWD, NBS, GAAD, NDKA, NM23, NDPKA, NDPK-A, NM23-H1
Swissprot	P15531

Target Background

This gene (NME1) was identified because of its reduced mRNA transcript levels in highly metastatic cells. Nucleoside diphosphate kinase (NDK) exists as a hexamer composed of 'A' (encoded by this gene) and 'B' (encoded by NME2) isoforms. Mutations in this gene have been identified in aggressive neuroblastomas. Two transcript variants encoding different isoforms have been found for this gene. Co-transcription of this gene and the neighboring downstream gene (NME2) generates naturally-occurring transcripts (NME1-NME2), which encodes a fusion protein comprised of sequence sharing identity with each individual gene product.

订购热线: 4008-898-798

Applications

Western blotting

Predicted band size:17 kDa

Positive control:A549 cells

Recommended dilution: 1000-5000

Gel: 10+12%SDS-PAGE

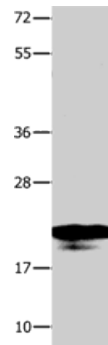
Lysate: 40 μ g

Lane: A549 cells

Primary antibody: ml121039(NME1 Antibody) at dilution 1/950

Secondary antibody: Goat anti rabbit IgG at 1/8000 dilution

Exposure time: 1 second



ELISA

Recommended dilution:2000-10000

联系电话: 4008-898-798, 021-61725725

联系QQ: 2881505695, 2881505696

邮箱: mlbio_cn@yeah.net

网址: www.mlbio.cn