

Anti-ORAOV1 antibody

| | |
|-----------------|---|
| Cat. No. | ml263594 |
| Package | 25 µl/100 µl/200 µl |
| Storage | -20°C, pH7.4 PBS, 0.05% NaN ₃ , 40% Glycerol |

Product overview

| | |
|---------------------|--|
| Description | Anti-ORAOV1 rabbit polyclonal antibody |
| Applications | ELISA, IHC |
| Immunogen | Synthetic peptide of human ORAOV1 |
| Reactivity | Human |
| Content | 1.1 mg/ml |
| Host species | Rabbit |
| Ig class | Immunogen-specific rabbit IgG |
| Purification | Antigen affinity purification |

Target information

| | |
|------------------|-----------------------------|
| Symbol | ORAOV1 |
| Full name | oral cancer overexpressed 1 |
| Synonyms | TAOS1 |
| Swissprot | Q8WV07 |

Target Background

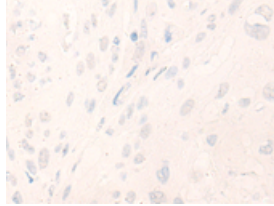
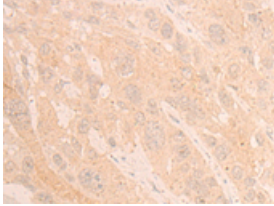
Oral Cancer Overexpressed 1 (ORAOV1) is a candidate protooncogene locating on 11q13. Recent studies show that ORAOV1 acts as a primary driving force behind 11q13 gene amplification and plays a functional role in the tumorigenesis in a variety of human squamous cell carcinomas (SCCs).

订购热线: 4008-898-798

Applications

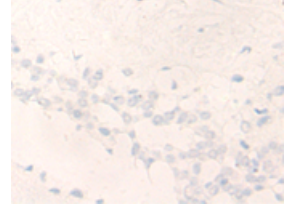
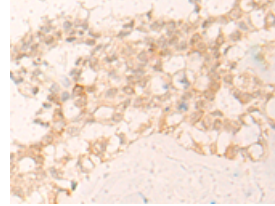
Immunohistochemistry

Predicted cell location: Nucleus and Cytoplasm
Positive control: Human esophagus cancer
Recommended dilution: 20-100



The image on the left is immunohistochemistry of paraffin-embedded Human esophagus cancer tissue using ml263594(ORAOV1 Antibody) at dilution 1/20, on the right is treated with synthetic peptide. (Original magnification: ×200)

Predicted cell location: Nucleus and Cytoplasm
Positive control: Human breast cancer
Recommended dilution: 20-100



The image on the left is immunohistochemistry of paraffin-embedded Human breast cancer tissue using ml263594(ORAOV1 Antibody) at dilution 1/20, on the right is treated with synthetic peptide. (Original magnification: ×200)

ELISA

Recommended dilution: 5000-10000

联系电话: 4008-898-798, 021-61725725

联系QQ: 2881505695, 2881505696

邮箱: mlbio_cn@yeah.net

网址: www.mlbio.cn