

Anti-CNN2 antibody

Cat. No.	ml224598
Package	25 µl/100 µl/200 µl
Storage	-20°C, pH7.4 PBS, 0.05% NaN ₃ , 40% Glycerol

Product overview

Description	Anti-CNN2 rabbit polyclonal antibody
Applications	ELISA, IHC
Immunogen	Fusion protein of human CNN2
Reactivity	Human, Mouse
Content	0.72 mg/ml
Host species	Rabbit
Ig class	Immunogen-specific rabbit IgG
Purification	Antigen affinity purification

Target information

Symbol	CNN2
Full name	calponin 2
Synonyms	
Swissprot	Q99439

Target Background

The protein encoded by this gene, which can bind actin, calmodulin, troponin C, and tropomyosin, may function in the structural organization of actin filaments. The encoded protein could play a role in smooth muscle contraction and cell adhesion. Several pseudogenes of this gene have been identified, and are present on chromosomes 1, 2, 3, 6, 9, 11, 13, 15, 16, 21 and 22. Alternative splicing results in multiple transcript variants encoding different isoforms.

订购热线: 4008-898-798

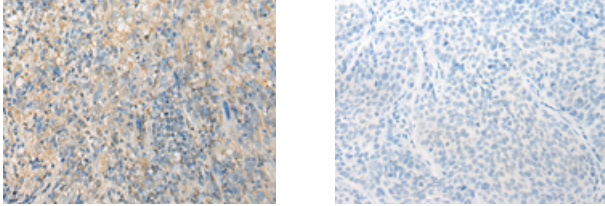
Applications

Immunohistochemistry

Predicted cell location: Cytoplasm

Positive control: Human cervical cancer

Recommended dilution: 20-100



The image on the left is immunohistochemistry of paraffin-embedded Human cervical cancer tissue using ml224598(CNN2 Antibody) at dilution 1/20, on the right is treated with fusion protein. (Original magnification: $\times 200$)

ELISA

Recommended dilution: 5000-10000

联系电话: 4008-898-798, 021-61725725

联系QQ: 2881505695, 2881505696

邮箱: mlbio_cn@yeah.net

网址: www.mlbio.cn