

Anti-MYL12B antibody

Cat. No.	ml163166
Package	25 µl/100 µl/200 µl
Storage	-20°C, pH7.4 PBS, 0.05% NaN ₃ , 40% Glycerol

Product overview

Description	Anti-MYL12B rabbit polyclonal antibody
Applications	ELISA, WB, IHC
Immunogen	Synthetic peptide of human MYL12B
Reactivity	Human, Mouse, Rat
Content	0.5 mg/ml
Host species	Rabbit
Ig class	Immunogen-specific rabbit IgG
Purification	Antigen affinity purification

Target information

Symbol	MYL12B
Full name	myosin light chain 12B
Synonyms	MLC-B; MRLC2
Swissprot	O14950

Target Background

MYL12B is a regulatory subunit of myosin and plays an important role in regulation of both smooth muscle and nonmuscle cell contractile activity via its phosphorylation. There are two groups of residues on the MYL12B that are phosphorylated by distinct kinases and have contrasting effects on myosin II biophysical properties. Phosphorylation at Thr18/Ser19 essentially "activates" the myosin molecule to produce force. The second group of phosphorylated residues is at the N-terminus of the MYL12B at Ser1, Ser2 and Thr9 and causes inhibitory effect on myosin activity.

订购热线: 4008-898-798

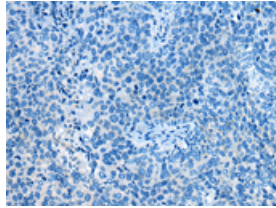
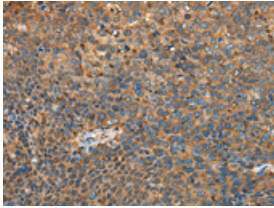
Applications

Immunohistochemistry

Predicted cell location: Cytoplasm

Positive control: Human cervical cancer

Recommended dilution: 30-150

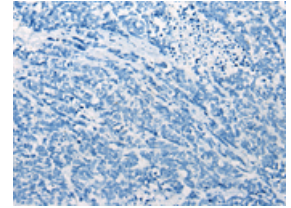
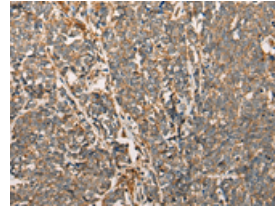


The image on the left is immunohistochemistry of paraffin-embedded Human cervical cancer tissue using ml163166(MYL12B Antibody) at dilution 1/25, on the right is treated with synthetic peptide. (Original magnification: $\times 200$)

Predicted cell location: Cytoplasm

Positive control: Human lung cancer

Recommended dilution: 30-150



The image on the left is immunohistochemistry of paraffin-embedded Human lung cancer tissue using ml163166(MYL12B Antibody) at dilution 1/25, on the right is treated with synthetic peptide. (Original magnification: $\times 200$)

Western blotting

Predicted band size: 20 kDa

Positive control: Human urinary bladder tissue lysate

Recommended dilution: 500-2000

Gel: 12% SDS-PAGE

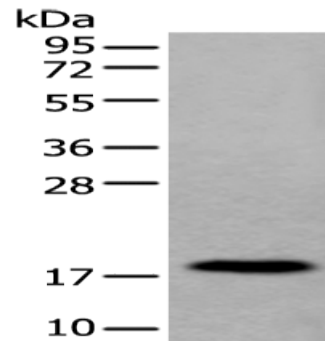
Lysate: 40 μ g

Lane: Human urinary bladder tissue lysate

Primary antibody: ml163166(MYL12B Antibody) at dilution 1/250

Secondary antibody: Goat anti rabbit IgG at 1/8000 dilution

Exposure time: 20 seconds



ELISA

Recommended dilution: 5000-10000

联系电话: 4008-898-798, 021-61725725

联系QQ: 2881505695, 2881505696

邮箱: mlbio_cn@yeah.net

网址: www.mlbio.cn